

BOCA WOODS COUNTRY CLUB PLAT 4

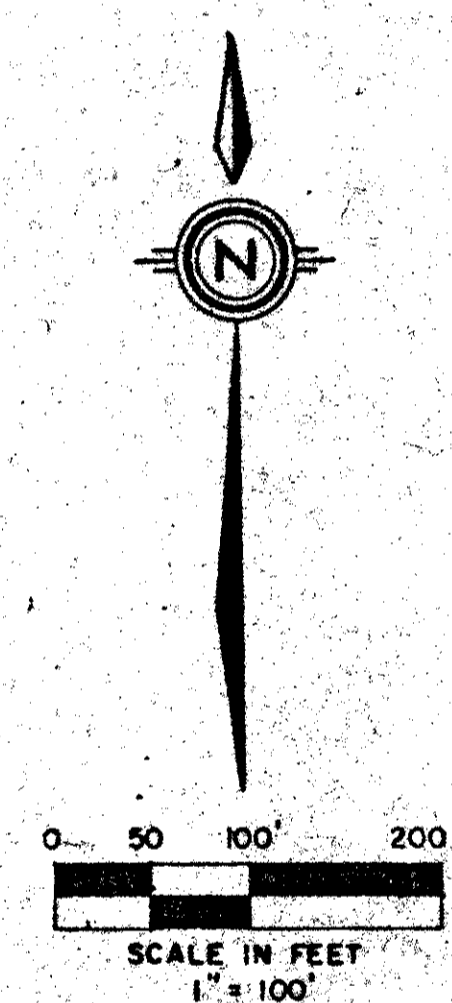
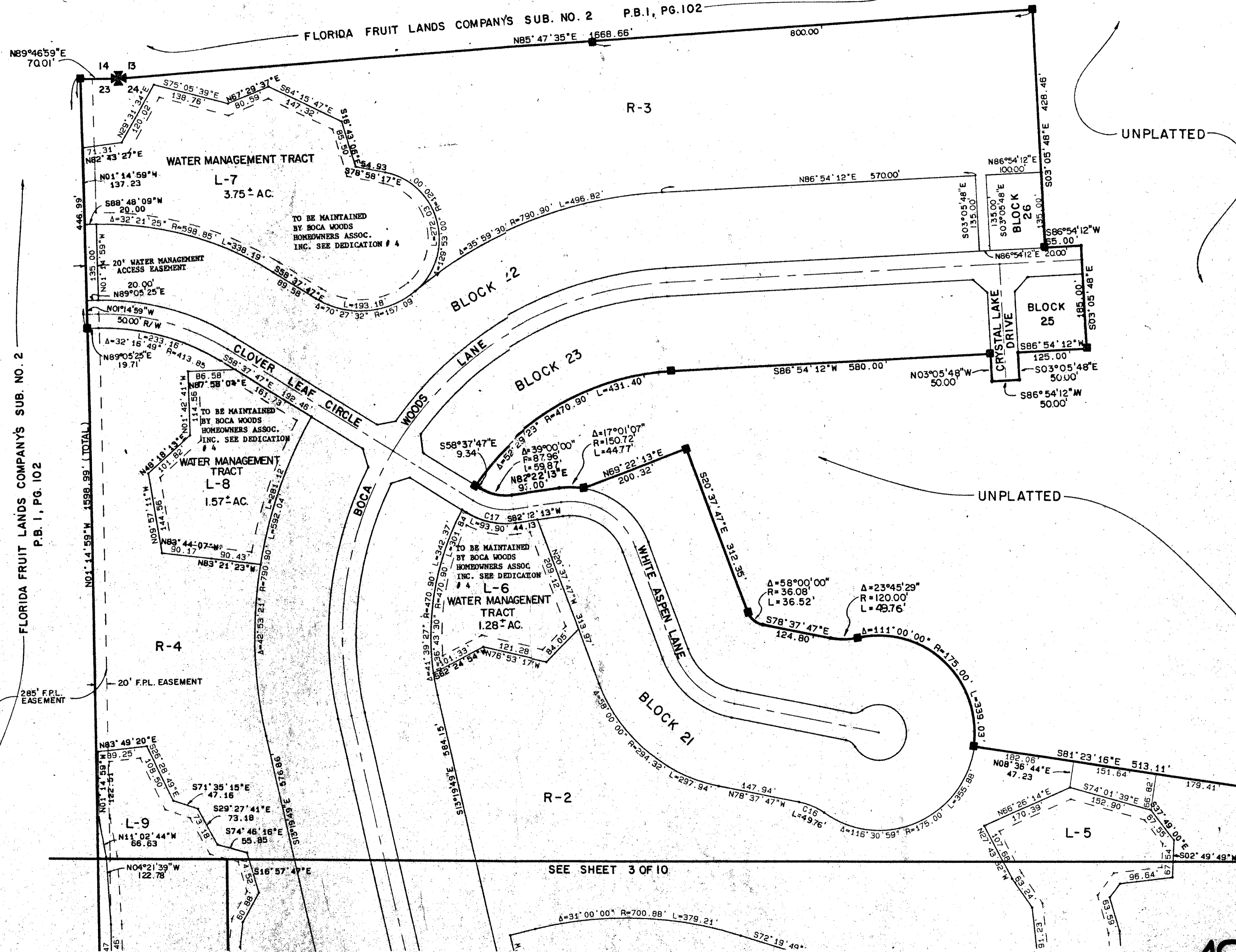
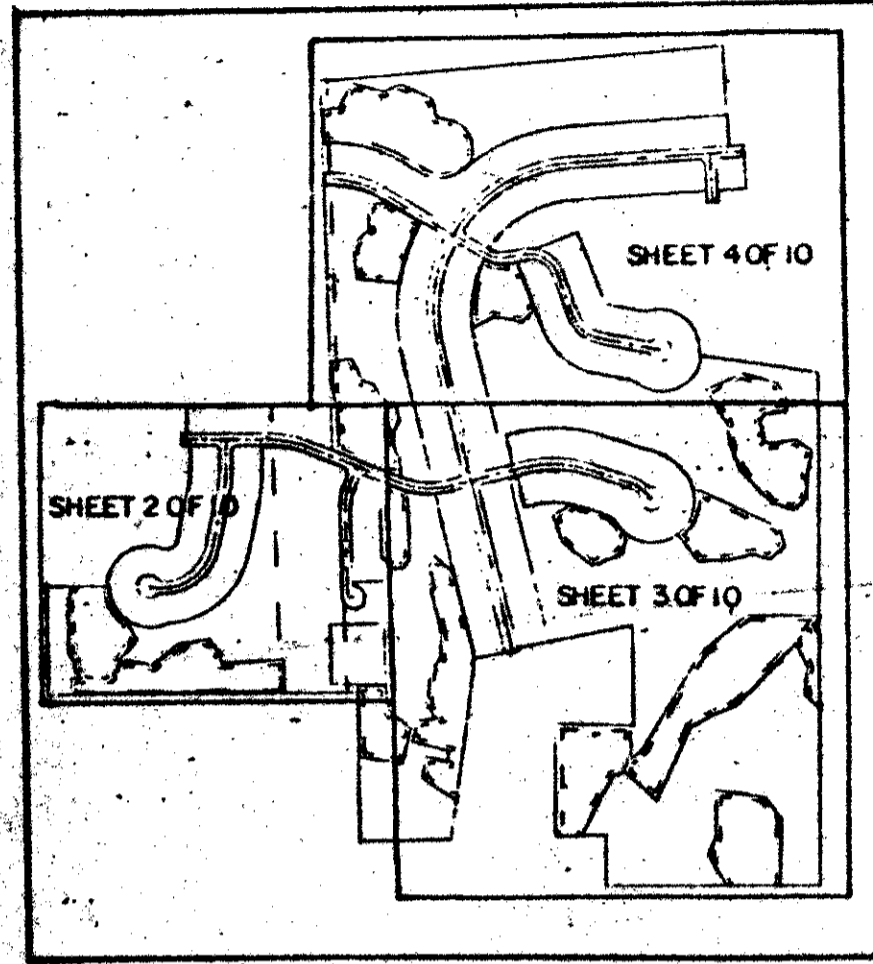
A PART OF BOCA WOODS COUNTRY CLUB, A P.U.D.
 SITUATE IN SECTIONS 23 AND 24, TOWNSHIP 47 SOUTH, RANGE 41 EAST,
 PALM BEACH COUNTY, FLORIDA, BEING A REPLAT OF A PORTION OF
 FLORIDA FRUIT LANDS COMPANY'S SUBDIVISION NO. 2,
 AS RECORDED IN PLAT BOOK 1, PAGE 102.

SHEET 4 OF 10

19

STATE OF FLORIDA
 COUNTY OF PALM BEACH
 THIS PLAT WAS FILED FOR
 RECORD AT _____ DAY OF _____
 AD, 1984 AND DULY RECORDED
 IN PLAT BOOK _____ ON PAGES
 AND _____
 JOHN B. DUNKLE, CLERK
 CIRCUIT COURT
 BY: _____, D.C.

SHEET LOCATION MAP



0215-307

48/19

Meridian		WEST PALM BEACH, FLORIDA	
Surveying and Mapping Inc.			
DRAWN	M.E.H.	DATE	JAN 1984
CHECKED		SCALE	1" = 100'
DRAWING NO.	82-P-051	BOCA WOODS COUNTRY CLUB PLAT 4	

DRAWING NUMBER

DRAWING NUMBER

DRAWING NUMBER

48/19

PLAN HOLD CORPORATION • IRVINE, CALIFORNIA
 RECORDED BY NUMBER 072548

PLAN HOLD CORPORATION • IRVINE, CALIFORNIA
 RECORDED BY NUMBER 072548

PLAN HOLD CORPORATION • IRVINE, CALIFORNIA
 RECORDED BY NUMBER 072548